



Holiday Inn Portsmouth Hotel

Pembroke Road, Portsmouth, PO1 2TA

0871 942 9065 (tel:0871 942 9065)

Visit website (<https://www.hiportsmouthhotel.co.uk>)



Access Guide

Hotel Introduction

Related Access Guide(s)

[View](#)

- [For the Holiday Inn Portsmouth - Leisure Facilities AccessAble access guide please click here \(new tab\) \(https://www.disabledgo.com/access-guide/holiday-inn/holiday-inn-portsmouth---leisure-facilities\)](https://www.disabledgo.com/access-guide/holiday-inn/holiday-inn-portsmouth---leisure-facilities).

Hotel Information

[View](#)

- The hotel has its own parking facilities.
- Conference/meeting facilities are available.
- The conference/meeting facilities are located on the ground floor and first floor.

Room Information

[View](#)

- The hotel has 173 rooms in total.
- There is an/are accessible room(s) within the hotel.
- The accessible room(s) is/are located on the ground floor.
- The hotel has 4 accessible room(s) with accessible ensuite facilities.
- There is an/are adjoining room(s) available for the accessible room(s).
- There is a/are standard room(s) available on the ground floor.
- Rooms on other floors are accessed via stairs or lift.

Auxiliary Aids

[View](#)

- Vibrating pillows with flashing beacons are available on request.
- Bed raisers are not available on request.
- Bath mats are available on request.
- All televisions have subtitles available.

Getting Here

By Road

[View](#)

- This hotel is located on Pembroke Road, south-west of Portsmouth city centre.
- This hotel has a car park which is free for all guests.

By Bus

[View](#)

- There is a bus stop within 150 metres of the hotel.
- The nearest bus stop is located on Pembroke Road.
- [For more information on First Group buses please click here \(opens new tab\) \(https://www.firstgroup.com\)](https://www.firstgroup.com).

By Train

[View](#)

- The nearest Railway Station is Portsmouth Harbour.
- Portsmouth Harbour Station is approximately 1.2 miles away. There are bus and taxi routes to the hotel from the station.

- For more information on National Rail please click here (opens new tab) (http://www.nationalrail.co.uk/stations_destinations/pmh.aspx).

Getting Help and Assistance

- There is a member of staff available for help and assistance.
- Staff receive disability awareness/equality training.
- There is not a member of staff trained in British Sign Language.
- Staff do not receive deaf awareness training.
- British Sign Language interpreters cannot be provided on request.
- The alternative formats documents can be provided in include; large print on request.
- There is not an assistance dog toilet or toileting area at the venue/near by.
- Water bowls for assistance dogs are not available.
- There are not mobility aids available.

Parking

Photos



1



2



3



4

Parking

[View](#)

- The hotel does have its own parking facilities.
- The car park is located in front of and at the side of the hotel.
- The car park type is open air/surface.
- The car park does not have a height restriction barrier.
- The car park does not have a barrier control system.
- The car park surface is tarmac.

- There is a/are Blue Badge parking bay(s) available.
- The Blue Badge bay(s) is/are clearly marked and signposted.
- There is/are 4 designated Blue Badge parking bay(s) within the car park.
- The dimensions of the designated Blue Badge parking bay(s) surveyed are 360cm x 590cm (11ft 10in x 19ft 4in).
- There is a 120cm hatched zone around the Blue Badge parking bay(s).
- The dimensions of other designated Blue Badge parking bay(s) vary in size.
- Parking spaces for Blue Badge holders do not need to be booked in advance.
- Clearly marked/signposted parent and child parking bays are not available.
- All parking spaces are provided on a first come first served basis.

Paying

View

- There are parking charges for the car park.
- Parking is not free for visitors of the venue.

Access from the Car Park

View

- The route from the car park to the entrance is accessible to a wheelchair user with assistance.
- Assistance may be required because there is/are dropped kerbs.
- The entrance is clearly visible from the car park.
- The route from the car park to the entrance is clearly signposted.
- The surface on the approach to the entrance is tarmac.
- There is a road to cross between the car park and the entrance.
- There is no tactile paving on dropped kerbs between the car park and the entrance.
- The nearest designated Blue Badge parking bay is approximately 21m (22yd 2ft) from the main entrance.

Drop-off Point(s)

View

- There is not a/are not clearly marked drop-off point(s).

Comments

[View](#)

- There is an unmarked drop off point at the front of the hotel.
- Please register your car registration at the hotel reception desk.
- Parking costs £5 per night.

Outside Access (Main Entrance)

Photos



1



2



3



4



5

Entrance

[View](#)

- This information is for the entrance located at the front of the hotel.
- The entrance area/door is clearly signed.
- There is ramped/sloped access at this entrance.
- There is not a canopy or recess which provides weather protection at this entrance.
- The entrance door(s) does not/do not contrast visually with its immediate surroundings.
- The main door(s) open(s) automatically.
- The door(s) is/are double width.
- The width of the door opening is 152cm.

- There is a second set of doors.
- The door(s) open(s) automatically.
- The door(s) is/are double width.
- The width of the door opening is 135cm.

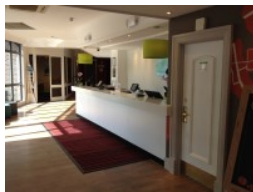
Ramp/Slope

[View](#)

- The ramp/slope is located in front of and leading to the entrance.
- The gradient of the ramp/slope is slight.
- The ramp/slope is permanent.
- There is not a level landing at the top of the ramp/slope.

Reception (Main Reception)

Photos



1



2



3

Reception

[View](#)

- The reception point is located to the left as you enter.
- The reception point is approximately 5m (5yd 1ft) from the main entrance.
- The reception area/desk is clearly visible from the entrance.
- There is step-free access to the reception point.
- There is a clear unobstructed route to the reception point.
- There are no windows, TVs, glazed screens or mirrors behind the reception point which could adversely affect the ability of someone to lip read.
- The reception counter is not placed in front of a background which is patterned.

- The lighting levels at the reception point are good.
- The height of the reception counter is medium height (77cm - 109cm).
- There is sufficient space to write or sign documents on the counter.
- There is not a lowered section of the counter.
- The counter is staffed.
- There is a hearing assistance system at the reception point.
- The type of system is a fixed loop.
- Staff are trained to use the hearing system.
- The type of flooring in the reception area is carpet and vinyl.

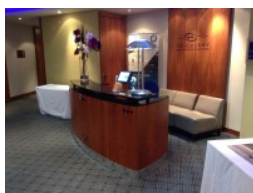
Reception Waiting Area

[View](#)

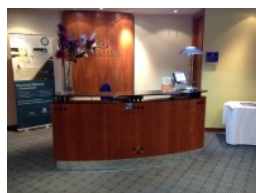
- There is a waiting area close to the reception point.
- Access to the waiting area is unobstructed.
- The seats do not have armrests.
- There is sufficient space for a wheelchair user to use the waiting area.

Reception (Conference Area)

Photos



1



2

Reception

[View](#)

- The reception point is located off the main corridor.
- The reception point is approximately 41m (44yd 2ft) from the main entrance.
- Clear signage for the reception area/desk is not visible from the entrance.

- There is step free access to the reception point.
- There is a clear unobstructed route to the reception point.
- There are no windows, TVs, glazed screens or mirrors behind the reception point which could adversely affect the ability of someone to lip read.
- The reception counter is not placed in front of a background which is patterned.
- The lighting levels at the reception point are low.
- The height of the reception counter is medium height (77cm - 109cm).
- There is sufficient space to write or sign documents on the counter.
- There is not a lowered section of the counter.
- The counter is not staffed.
- There is not a bell to attract attention.
- There is a hearing assistance system at the reception point.
- The type of system is a fixed loop.
- The hearing assistance system is signed.
- Staff are trained to use the system.
- The touch screen is not at a suitable height for a wheelchair user.
- There is a touch screen.
- Signs and universally accepted symbols or pictograms, indicating lifts, stairs, WCs, circulation routes and other parts of the building are not provided in the reception area.
- The type of flooring in the reception area is carpet.

Reception Waiting Area

[View](#)

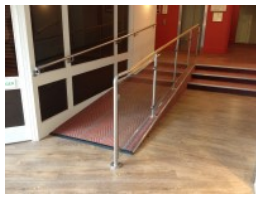
- There is not a waiting area close to the reception point.

Getting Around

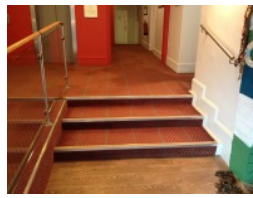
 **Photos**



1



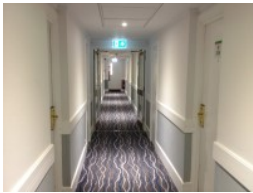
2



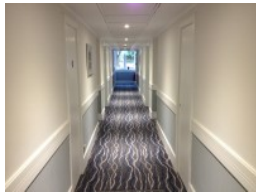
3



4



5



6



7

Access

View

- There is step free access throughout the majority of the building.
- There is a steep ramp, with handrails on both sides, for access to the lifts and standard toilets.
- The ramp/slope does bypass the step(s).
- There is/are 3 clearly marked step(s), with handrails on both sides, for access to the lift and standard toilets.
- The height of the step(s) is/are between the recommended 15cm and 18cm.
- There is/are 3 unmarked step(s), with no handrails, for access to Executive Rooms 15 and 16.
- The height of the step(s) is/are not between the recommended 15cm and 18cm.
- The going of the step(s) is/are between the recommended 30cm and 45cm.

Circulation

View

- There are doors in corridors/walkways which have to be opened manually.
- The type of flooring in corridors/walkways is carpet and vinyl.
- There is some flooring in corridors/walkways which includes patterns or colours which could be confusing or look like steps or holes to some people.

- There is some flooring in corridors/walkways which is shiny and could cause issues with glare or look slippery to some people.
- There is good colour contrast between the walls and floor in all areas.
- The lighting levels are varied.
- Access to other floors/levels is via stairs and lift.

Signage

View

- Wayfinding signage is provided.
- The colour, design and typeface of signs is consistent throughout the building.

Audio

View

- This venue does play background music in public areas.
- Music is played in the reception and restaurant areas.
- There is a hearing assistance system in the public areas of the building.
- The system is a portable loop.

Eating and Drinking (Bar)

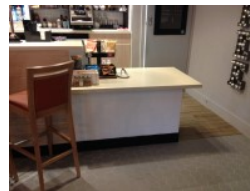
Photos



1



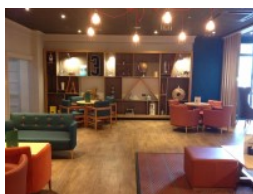
2



3



4



5



6

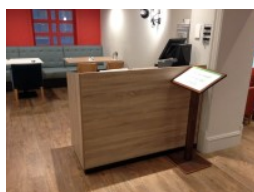
-
- The following information is for the bar.

- The bar is located to the right as you enter the hotel.
- There is step-free access to the bar.
- Full table service is not available.
- Food and/or drinks are ordered from the service counter.
- Food and/or drinks can be brought to the table.
- The height of the service counter is high (110cm+).
- There is a lowered section of the counter.
- There is not a clear knee recess beneath the low/lowered section of the counter.
- There is not a hearing assistance system.
- There is step-free access within the bar.
- There is ample room for a wheelchair user to manoeuvre.
- This area does play background music.
- The type of flooring in this area is carpet and vinyl.
- No tables are permanently fixed.
- Some chairs are permanently fixed.
- Some chairs have armrests on both sides.
- The nearest table is approximately 3m from the entrance/opening.
- The nearest table is approximately 5m from the till/counter.
- The distance between the floor and the lowest table is 38cm.
- The distance between the floor and the highest table is 100cm.
- The standard height for tables is 73cm.
- Plastic/takeaway cups are available.
- Plastic/takeaway cutlery is available.
- Drinking straws are available.
- There are hand held menus available.
- Menus are not available in Braille.
- Menus are not available in large print.
- Picture menus are not available.
- Menus are clearly written.
- Menus are presented in contrasting colours.

- The type of food served here is a modern bar menu.
- The lighting levels are good.

Eating and Drinking (Restaurant)

Photos



1



2



3



4

-
- The following information is for the restaurant.
 - The restaurant is located to the right as you enter the hotel.
 - There is step free access to the restaurant.
 - Full table service is available.
 - There is not a hearing assistance system.
 - There is step free access within the restaurant.
 - There is ample room for a wheelchair user to manoeuvre.
 - This area does play background music.
 - The type of flooring in this area is carpet and vinyl.
 - No tables are permanently fixed.
 - Some chairs are permanently fixed.
 - Some chairs have armrests on both sides.
 - The nearest table is approximately 20m from the entrance/opening.
 - The nearest table is approximately 2m from the till/counter.
 - The distance between the floor and the lowest table is 68cm.
 - The distance between the floor and the highest table is 69cm.
 - Plastic/takeaway cups are available.
 - Plastic/takeaway cutlery is available.
 - Drinking straws are available.
 - There are hand held menus available.

- Menus are not available in Braille.
- Menus are not available in large print.
- Picture menus are not available.
- Menus are clearly written.
- Menus are presented in contrasting colours.
- The type of food served here is a modern bar menu.
- The lighting levels are good.

Conference / Meeting Facilities

Photos



1



2



3



4

- Conference/meeting facilities are available.
- The conference/meeting facilities are located on the ground floor and first floor.
- There is step free access to the conference/meeting facilities.
- The door opening width(s) is/are 75cm+ for the room(s).
- There is a hearing assistance system for the room(s) available on request.
- There is a/are chair(s) with armrests on both sides within the room(s).
- There is sufficient space for a wheelchair user to manoeuvre within the room(s).
- The lighting levels in the room(s) are good.

Comments

[View](#)

- Normandy Suites 1 & 2 have a fixed hearing loop system.
- Normandy, Maritime and Victory Suites are larger rooms.
- Compass, Hamilton, Lighthouse, Mary Rose and Nelson Suites are smaller rooms and all have an opening door width of 75cm+.

Accessible Room(s) (Rooms 003, 004, 007 and 008)

Photos



1



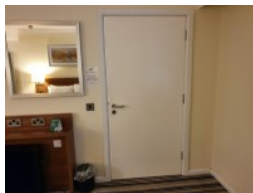
2



3



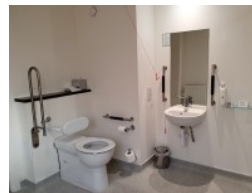
4



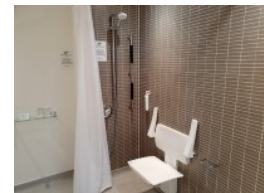
5



6



7



8

Accessible Room Information

[View](#)

- The details in this section relates to the accessible room(s) with a wet room/wheel in shower.
- This type of accessible room is located on the ground floor.
- There is step-free access to this type of accessible room.
- All accessible rooms of this type have similar specifications.
- Guests do not need to open a door between the entrance and the room(s).
- The narrowest width of the corridor leading to the room surveyed was 130cm.
- The room surveyed does not have an adjoining room.

Bedroom Features

[View](#)

- The accessible room surveyed is located on the ground floor.
- The accessible room surveyed at the time of the visit was Room 007.
- There is ramped/sloped or stepped access to the accessible room surveyed.

- There is numbered signage on or near the accessible room door.
- The door is key card activated.
- The fob/card reader height is 108cm.
- The width of the door is 88cm (2ft 11in).
- There are lowered spy holes available.
- The bed type is double.
- The bed height is not adjustable.
- The height of the bed is 57cm (1ft 10in).
- The measurement between the bed base and floor is 14cm (6in).
- The bed is not moveable.
- The room does have an unobstructed minimum turning space of 150cm x 150cm next to the bed.
- The desk N/A height adjustable.
- The room surveyed had an armchair.
- Wardrobes have been adapted to allow use from a seated position.
- Light switches are between 75cm and 120cm (4ft) from floor level.
- Electric sockets are between 40cm and 100cm (4ft) from floor level.
- Electric sockets are accessible from the bed.
- The window control type(s) for the room is a/are standard lever(s).
- The window controls are not at a suitable height for a wheelchair user.
- There is an emergency alarm in the room.
- The emergency pull cord alarm is within reach and fully functional.
- The emergency alarm rings to reception.
- There is a flashing fire alarm beacon within the room.
- The type of flooring is carpet.

Ensuite Facilities

View

- The ensuite door opens outwards.
- The door weight is light.
- The door is locked by a twist lock.
- The width of the door to the ensuite is 88cm (2ft 11in).

- The door has a horizontal grab rail.
- The dimensions of the ensuite are 280cm x 300cm (9ft 2in x 9ft 10in).
- The ensuite does have an unobstructed minimum turning space of 150cm x 150cm in front of the toilet seat.
- The ensuite has a non-slip floor.
- There is an emergency alarm within the ensuite.
- The emergency pull cord alarm is within reach and fully functional.
- The emergency alarm rings to reception.
- There is a flashing fire alarm beacon within the ensuite.
- Disposal facilities are available.
- There is a/are pedal waste paper bin disposal units.
- There is a mirror.
- The mirror is not placed at a lower level or at an angle for ease of use.
- There is a shelf immediately next to or behind the toilet.
- There is a wash basin.
- The wash basin cannot be reached from seated on the toilet.
- The wash basin is placed higher than 74cm (2ft 5in).
- The height of the wash basin is 77cm.
- There are vertical wall-mounted grab rails on both sides of the wash basin.
- The tap type is lever.
- There is a mixer tap.
- Taps have clear markings to indicate hot and cold settings.
- There is a soap dispenser.
- The soap dispenser cannot be reached from seated on the toilet.
- The height of the soap dispenser is 87cm.

Toilet Details

[View](#)

- The height of the toilet seat above floor level is 51cm (1ft 8in).
- The toilet has a backrest.
- There is a lateral transfer space.

- As you face the toilet pan the transfer space is on the left.
- The lateral transfer space is 150cm (4ft 11in).
- There is a flush on the transfer side.
- There is a spatula type lever flush.
- There is a dropdown rail on the transfer side.
- There is a/are wall-mounted grab rail(s) available.
- As you face the toilet, the wall mounted grab rails are on the right.
- There is not a vertical wall-mounted grab rail on the transfer side.
- There is a horizontal wall-mounted grab rail on the opposite side of the seat to the transfer space.
- There is a toilet roll holder.
- The toilet roll holder can be reached from seated on the toilet.
- The toilet roll holder is not placed higher than 100cm (3ft 3in).
- The height of the toilet roll holder is 56cm (1ft 10in).

Shower Details

[View](#)

- The ensuite has a wheel in shower.
- The shower head is height adjustable.
- The shower control type is twist/turn.
- Shower controls have clear markings to indicate hot and cold settings.
- There is a flip-down/tip-up seat for the shower.
- The height of the flip-down/tip-up or fixed seat is 46cm (1ft 6in).
- There is a/are wall-mounted grab rail(s) available for the shower.
- There is a single vertical grab rail to assist standing users.

Colour Contrast and Lighting

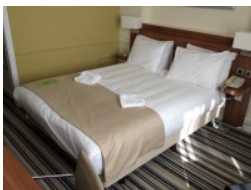
[View](#)

- The colour contrast between the external room door and wall is good.
- The colour contrast between the internal room door and wall is fair.
- The colour contrast between the room walls and floor is good.
- The colour contrast between the external ensuite door and wall is poor.

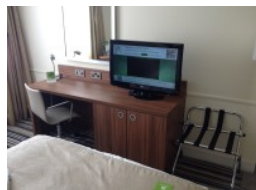
- The colour contrast between the internal ensuite door and wall is poor.
- The colour contrast between the ensuite walls and floor is good.
- The colour contrast between the dropdown rail(s) and wall is good.
- The colour contrast between the wall-mounted grab rail(s) and wall is good.
- The contrast between the wash basin wall-mounted grab rail(s) and wall is good.
- The colour contrast between the shower wall-mounted grab rails and wall is good.
- The toilet seat colour contrast is poor.
- The lighting levels in the room are low to moderate.
- The lighting levels in the ensuite are good.

Standard Room(s) (Room 321)

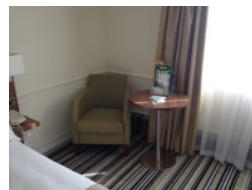
Photos



1



2



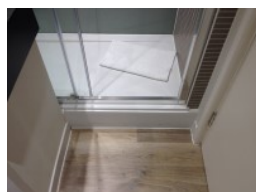
3



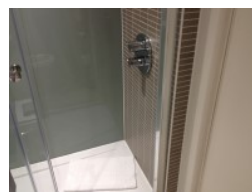
4



5



6



7

Bedroom Features

[View](#)

- The room surveyed is located on the third floor.
- The room surveyed at the time of the visit was Room 321.
- There is step-free access to the room surveyed, via lift.
- There is numbered signage on or near the room door.

- The width of the door is 68cm (2ft 3in).
- The bed type is double.
- The height of the bed is 55cm (1ft 10in).
- The measurement between the bed base and floor is 12cm (5in).
- Light switches are not within 120cm (3ft 11in) from floor level.
- There is an emergency alarm in the room.
- The emergency alarm is a push button.
- The type of facilities within the ensuite include; a toilet, a wash basin and a shower.
- The ensuite door opens inwards.
- The width of the door to the ensuite is 55cm (1ft 10in).
- There is not an emergency alarm within the ensuite.
- There is not a flashing fire alarm beacon within the ensuite.
- The tap type is lever.
- There is a mixer tap.

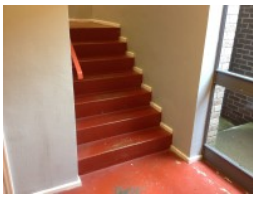
Colour Contrast and Lighting

View

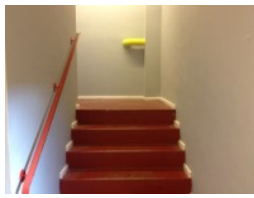
- The colour contrast between the external room door and wall is fair.
- The colour contrast between the internal room door and wall is fair.
- The colour contrast between the room walls and floor is good.
- The colour contrast between the external ensuite door and wall is fair.
- The colour contrast between the internal ensuite door and wall is poor.
- The colour contrast between the walls and floor in the ensuite is good.
- The lighting levels in the room are good.
- The lighting levels in the ensuite are good.

Other Floors

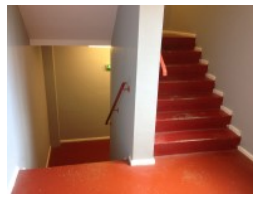
 **Photos**



1



2



3



4

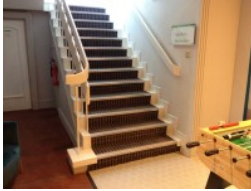
Stairs

View

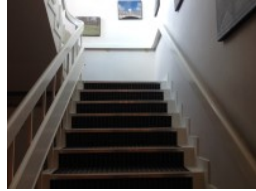
- Stairs can be used to access other floors.
- The stairs are for public use.
- The stairs are located off the main corridor.
- The stairs are approximately 25m from the main entrance.
- Signs indicating the location of the stairs are not available from the entrance.
- There are manual, heavy, single doors to enter and exit the stairwell on all floors.
- The floors which are accessible by stairs are G, 1, 2, 3, 4, 5 and 6.
- There are 14 steps between floors.
- The height of the step(s) is/are not between the recommended 15cm and 18cm.
- The height of the step(s) is/are 19cm.
- The going of the step(s) is/are not between the recommended 30cm and 45cm.
- The steps are not clearly marked.
- There is a/are handrail(s) at the step(s).
- The steps have a handrail on the left going up.
- Handrails are not at the recommended height (90cm-100cm).
- Handrails do not cover the flight of stairs throughout its length.
- Handrails are easy to grip.
- Handrails do not extend horizontally beyond the first and last steps.
- There is a landing.
- Clear signs indicating the facilities on each floor are not provided on landings.
- The lighting levels at the steps are good.

Other Floors (Executive and Solent Room)

Photos



1



2

Stairs

View

- Stairs can be used to access other floors.
- The stairs are for public use.
- The stairs are located in the bar area.
- The stairs are approximately 12m from the main entrance.
- Signs indicating the location of the stairs are not available from the entrance.
- The floors which are accessible by stairs are ground and first.
- There are 15+ steps between floors.
- The height of the step(s) is/are between the recommended 15cm and 18cm.
- The going of the step(s) is/are not between the recommended 30cm and 45cm.
- The steps are clearly marked.
- There is a/are handrail(s) at the step(s).
- The steps have a handrail on both sides.
- Handrails are at the recommended height (90cm-100cm).
- Handrails do not cover the flight of stairs throughout its length.
- Handrails are easy to grip.
- Handrails do not extend horizontally beyond the first and last steps.
- There is a landing.

- Clear signs indicating the facilities on each floor are not provided on landings.
- The lighting levels at the steps are varied.

Lift

Photos



1



2



3



4



5

-
- There is a lift for public use.
 - The lift is located ahead from the ramp.
 - The lift is clearly visible from the entrance.
 - The lift is approximately 20m (21yd 2ft) from the main entrance.
 - The lift is a standard lift.
 - A member of staff does not need to be notified for use of the lift.
 - The floors which are accessible by this lift are G, 1, 2, 3, 4, 5 and 6.
 - Clear signs indicating the facilities on each floor are not provided on lift lobby landings.
 - There is a clear level manoeuvring space of 150cm × 150cm in front of the lift.
 - Lift doors do contrast visually with lift lobby walls.
 - The external controls for the lift are within 90cm - 110cm from the floor.
 - The colour contrast between the external lift controls and the control plate is good.

- The colour contrast between the external lift control plate and the wall is good.
- The clear door width is 77cm (2ft 6in).
- The dimensions of the lift are 102cm x 130cm (3ft 4in x 4ft 3in).
- There are no separate entry and exit doors in the lift.
- There is a mirror to aid reversing out of the lift.
- There is not a list of floor services available within the lift.
- The lift does have a visual floor indicator.
- The lift does not have an audible announcer.
- The controls for the lift are within 90cm - 120cm from the floor.
- There is a hearing loop system.
- The lift does not have Braille markings.
- The lift does have tactile markings.
- The lighting levels in the lift are low.
- There is a/are similar lift(s) available.

Accessible Toilet(s) (Conference Area - Right Transfer)

Photos



1



2

-
- There is an/are accessible toilet(s) for public use.

Location and Access

[View](#)

- This accessible toilet is located to the right as you enter the hotel and then straight ahead towards the conference centre, then right after the conference centre reception.

- This accessible toilet is approximately 51m (55yd 2ft) from the main entrance.
- There is step-free access to the accessible toilet.

Features and Dimensions

View

- This is a shared toilet.
- A key is not required for the accessible toilet.
- There is tactile, pictorial and written text signage on or near the toilet door.
- The door opens outwards.
- The door is heavy.
- The door is locked by a lever twist.
- The width of the accessible toilet door is 87cm (2ft 10in).
- The dimensions of the accessible toilet are 190cm x 150cm (6ft 3in x 4ft 11in).
- The accessible toilet does not have an unobstructed minimum turning space of 150cm x 150cm.
- The toilet has not got a non-slip floor.
- There is a lateral transfer space.
- As you face the toilet pan the transfer space is on the right.
- The lateral transfer space is 82cm (2ft 8in).
- There is a flush on the transfer side.
- There is not a spatula type lever flush.
- There is a dropdown rail on the transfer side.
- There is an emergency alarm.
- The emergency pull cord alarm is fully functional.
- There is not a flashing fire alarm beacon within the toilet.
- Disposal facilities are available in the toilet.
- There is a/are female sanitary, general domestic waste and waste paper pedal bin disposal units.
- There is not a/are not coat hook(s).

Position of Fixtures

View

- There is a/are wall-mounted grab rail(s) available.
- As you face the toilet the wall-mounted grab rail(s) is/are on both sides.
- There is a vertical wall-mounted grab rail on the transfer side.
- There is a horizontal wall-mounted grab rail on the opposite side of the seat to the transfer space.
- There is a mirror.
- The mirror is not placed at a lower level or at an angle for ease of use.
- There is not a shelf next to the toilet.
- The toilet has a cistern.
- The height of the toilet seat above floor level is 46cm (1ft 6in).
- There is a toilet roll holder.
- The toilet roll holder cannot be reached from seated on the toilet.
- The toilet roll holder is not placed higher than 100cm (3ft 3in).
- The height of the toilet roll holder is 99cm (3ft 3in).
- There is a wash basin.
- The wash basin can be reached from seated on the toilet.
- The wash basin is not placed higher than 74cm (2ft 5in).
- The height of the wash basin is 70cm (2ft 4in).
- There is a vertical wall-mounted grab rail on the right hand side of the wash basin.
- The wash basin tap type is lever.
- There is a mixer tap.
- There is a soap dispenser.
- The soap dispenser can be reached from seated on the toilet.
- The height of the soap dispenser is 100cm.
- There is a towel dispenser.
- The towel dispenser cannot be reached from seated on the toilet.
- The towel dispenser is not placed higher than 100cm (3ft 3in).
- The height of the towel dispenser is 98cm (3ft 3in).

- There is a hand dryer.
- The hand dryer cannot be reached from seated on the toilet.
- The hand dryer is placed higher than 100cm (3ft 3in).
- The height of the hand dryer is 110cm (3ft 7in).

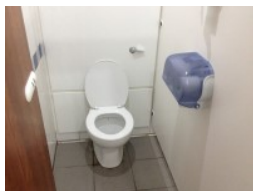
Colour Contrast and Lighting

[View](#)

- The contrast between the external door and wall is good.
- The contrast between the internal door and wall is good.
- The contrast between the dropdown rail(s) and wall is poor.
- The contrast between the wall-mounted grab rail(s) and wall is poor.
- The toilet seat colour contrast is poor.
- The contrast between the walls and floor is good.
- The lighting levels are low to moderate.

Standard Toilet(s) (Conference Area)

Photos



1



2



3

-
- Standard toilet facilities are available.

Access to Standard Female and Male Toilet(s)

[View](#)

- The female and male toilet facilities that were surveyed are located to the right as you enter the hotel and then straight ahead towards the conference centre, then right after the conference centre reception.
- The female and male toilets are approximately 52m (56yd 2ft) from the main entrance.
- There is step free access to the female and male toilet(s).

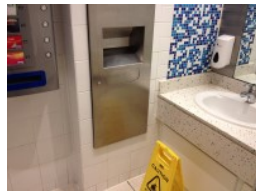
- There is tactile, pictorial and written text signage on or near the toilet door.
- An ambulant toilet with wall-mounted grab rails is not available.
- The wash basin tap type is twist/turn.
- There is not a flashing fire alarm beacon within the toilets.
- Lighting levels are good.
- There is a/are similar standard toilet(s) available.

Standard Toilet(s)

Photos



1



2



3

-
- Standard toilet facilities are available.

Access to Standard Female and Male Toilet(s)

[View](#)

- The female and male toilet facilities that were surveyed are located to the left and right of the lifts.
- The female and male toilets are approximately 22m (24yd 2in) from the main entrance.
- There is ramped/sloped or stepped access to the female and male toilet(s).
- There is pictorial signage on or near the toilet door.
- An ambulant toilet with wall-mounted grab rails is not available.
- The wash basin tap type is lever.
- Lighting levels are at least 100 lux at floor level.