



# Holiday Inn Portsmouth Hotel - Leisure Facilities

Pembroke Road, Portsmouth, PO1 2TA

0871 942 9065 (tel:0871 942 9065)

Visit website (<https://www.hiportsmouthhotel.co.uk>)



## Access Guide

## Leisure Facilities Introduction

### Related Access Guide(s)

[View](#)

- [For the Holiday Inn Portsmouth DisabledGo access guide please click here \(new tab\) \(http://www.disabledgo.com/access-guide/holiday-inn/holiday-inn-portsmouth\).](http://www.disabledgo.com/access-guide/holiday-inn/holiday-inn-portsmouth)

### Leisure Facilities Information

[View](#)

- The leisure facilities are located on the ground floor of the hotel.

## Getting Here

## By Road

[View](#)

- This hotel is located on Pembroke Road, south-west of Portsmouth city centre.
- This hotel has a car park which is free for all guests.

## By Bus

[View](#)

- There is a bus stop within 150 metres of the hotel.
- The nearest bus stop is located on Pembroke Road.
- **[For more information on First Group buses please click here \(opens new tab\)](https://www.firstgroup.com)** (<https://www.firstgroup.com>).

## By Train

[View](#)

- The nearest Railway Station is Portsmouth Harbour.
- Portsmouth Harbour Station is approximately 1.2 miles away. There are bus and taxi routes to the hotel from the station.
- **[For more information on National Rail please click here \(opens new tab\)](http://www.nationalrail.co.uk/stations_destinations/pmh.aspx)** ([http://www.nationalrail.co.uk/stations\\_destinations/pmh.aspx](http://www.nationalrail.co.uk/stations_destinations/pmh.aspx)).

## Getting Help and Assistance

- There is a member of staff available for help and assistance.
- Staff receive disability awareness/equality training.
- There is not a member of staff trained in British Sign Language.
- Staff do not receive deaf awareness training.
- British Sign Language interpreters cannot be provided on request.
- The alternative formats documents can be provided in include; large print on request.
- There is not an assistance dog toilet or toileting area at the venue/near by.
- Water bowls for assistance dogs are not available.
- There are not mobility aids available.

# Parking

## Photos



1



2



3



4

---

## Parking

**View**

- The hotel does have its own parking facilities.
- The car park is located in front of and at the side of the hotel.
- The car park type is open air/surface.
- The car park does not have a height restriction barrier.
- The car park does not have a barrier control system.
- The car park surface is tarmac.
- There is a/are Blue Badge parking bay(s) available.
- The Blue Badge bay(s) is/are clearly marked and signposted.
- There is/are 4 designated Blue Badge parking bay(s) within the car park.
- The dimensions of the designated Blue Badge parking bay(s) surveyed are 360cm x 590cm (11ft 10in x 19ft 4in).
- There is a 120cm hatched zone around the Blue Badge parking bay(s).
- The dimensions of other designated Blue Badge parking bay(s) vary in size.
- Parking spaces for Blue Badge holders do not need to be booked in advance.
- Clearly marked/signposted parent and child parking bays are not available.
- All parking spaces are provided on a first come first served basis.

## Paying

**View**

- There are parking charges for the car park.

- Parking is not free for visitors of the venue.

## Access from the Car Park

[View](#)

- The route from the car park to the entrance is accessible to a wheelchair user with assistance.
- Assistance may be required because there is/are dropped kerbs.
- The entrance is clearly visible from the car park.
- The route from the car park to the entrance is clearly signposted.
- The surface on the approach to the entrance is tarmac.
- There is a road to cross between the car park and the entrance.
- There is no tactile paving on dropped kerbs between the car park and the entrance.
- The nearest designated Blue Badge parking bay is approximately 21m (22yd 2ft) from the main entrance.

## Drop-off Point(s)

[View](#)

- There is not a/are not clearly marked drop-off point(s).

## Comments

[View](#)

- There is an unmarked drop off point at the front of the hotel.
- Please register your car registration at the hotel reception desk.
- Parking costs £5 per night.

# Outside Access (Main Entrance)

## Photos



1



2



3



4



5

---

## Entrance

### View

- This information is for the entrance located at the front of the hotel.
- The entrance area/door is clearly signed.
- There is ramped/sloped access at this entrance.
- There is not a canopy or recess which provides weather protection at this entrance.
- The entrance door(s) does not/do not contrast visually with its immediate surroundings.
- The main door(s) open(s) automatically.
- The door(s) is/are double width.
- The width of the door opening is 152cm.
- There is a second set of doors.
- The door(s) open(s) automatically.
- The door(s) is/are double width.
- The width of the door opening is 135cm.

## Ramp/Slope

### View

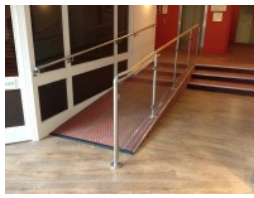
- The ramp/slope is located in front of and leading to the entrance.
- The gradient of the ramp/slope is slight.
- The ramp/slope is permanent.
- There is not a level landing at the top of the ramp/slope.

# Getting Around

 Photos



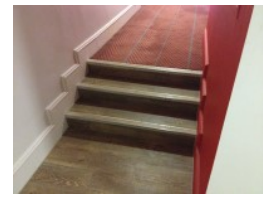
1



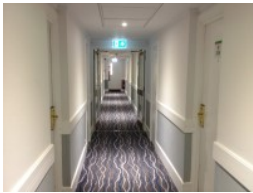
2



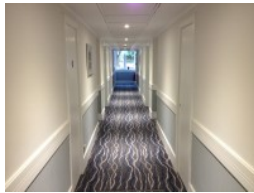
3



4



5



6



7

---

## Access

### View

- There is step free access throughout the majority of the building.
- There is a steep ramp, with handrails on both sides, for access to the lifts and standard toilets.
- The ramp/slope does bypass the step(s).
- There is/are 3 clearly marked step(s), with handrails on both sides, for access to the lift and standard toilets.
- The height of the step(s) is/are between the recommended 15cm and 18cm.
- There is/are 3 unmarked step(s), with no handrails, for access to Executive Rooms 15 and 16.
- The height of the step(s) is/are not between the recommended 15cm and 18cm.
- The going of the step(s) is/are between the recommended 30cm and 45cm.

## Circulation

### View

- There are doors in corridors/walkways which have to be opened manually.
- The type of flooring in corridors/walkways is carpet and vinyl.
- There is some flooring in corridors/walkways which includes patterns or colours which could be confusing or look like steps or holes to some people.

- There is some flooring in corridors/walkways which is shiny and could cause issues with glare or look slippery to some people.
- There is good colour contrast between the walls and floor in all areas.
- The lighting levels are varied.
- Access to other floors/levels is via stairs and lift.

## Signage

[View](#)

- Wayfinding signage is provided.
- The colour, design and typeface of signs is consistent throughout the building.

## Audio

[View](#)

- This venue does play background music in public areas.
- Music is played in the reception and restaurant areas.
- There is a hearing assistance system in the public areas of the building.
- The system is a portable loop.

## Opening Times

- Monday 06:30 - 22:00.
- Tuesday 06:30 - 22:00.
- Wednesday 06:30 - 22:00.
- Thursday 06:30 - 22:00.
- Friday 06:30 - 21:00.
- Saturday 07:00 - 21:00.
- Sunday 07:00 - 21:00.

## Entrance (Leisure Facilities)

 [Photos](#)



1

---

## Entrance

### View

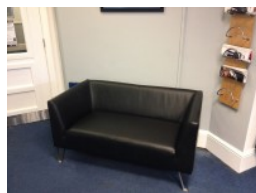
- This information is for the entrance located to the right as you enter the hotel, off the main corridor.
- The entrance area/door is clearly signed.
- There is step free access at this entrance.
- The entrance door(s) does not/do not contrast visually with its immediate surroundings.
- The main door(s) open(s) towards you (pull).
- The door(s) is/are double width but one door is locked.
- The door(s) is/are heavy.
- The width of the door opening is 66cm.
- There is a second set of doors.
- The door(s) open(s) towards you (pull).
- The door(s) is/are single width.
- The door(s) is/are heavy.
- The width of the door opening is 75cm.

## Reception (Leisure Facilities)

### Photos



1



2

---

## Reception



- The reception point is located to the right as you enter the leisure facilities entrance.
- The reception point is approximately 3m (3yd 10in) from the leisure facilities entrance.
- The reception area/desk is clearly visible from the entrance.
- There is step free access to the reception point.
- There is a clear unobstructed route to the reception point.
- There are windows, TVs, glazed screens or mirrors behind the reception point which could adversely affect the ability of someone to lip read.
- The reception counter is not placed in front of a background which is patterned.
- The lighting levels at the reception point are good.
- The height of the reception counter is high (110cm+).
- There is sufficient space to write or sign documents on the counter.
- There is not a lowered section of the counter.
- The counter is staffed.
- There is not a hearing assistance system at the reception point.
- Signs and universally accepted symbols or pictograms, indicating lifts, stairs, WCs, circulation routes and other parts of the building are not provided in the reception area.
- The type of flooring in the reception area is vinyl.

## **Reception Waiting Area**

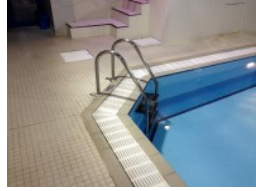
- There is a waiting area close to the reception point.
- Access to the waiting area is unobstructed.
- There are sofas only in the waiting area.
- There is not sufficient space for a wheelchair user to use the waiting area.

## **Swimming Pool**

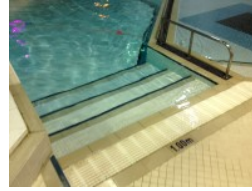
## Photos



1



2



3

- 
- There is not level access from the changing area to the swimming pool.
  - There is not a ramped entrance into the water.
  - There is not a wet side chair available.
  - There is not a hoist for wheelchair users to access the water.
  - There are steps into the swimming pool.
  - There are 4 steps.
  - There is a ladder type entrance into the water.
  - There is a handrail on both sides of the ladder.

## Ramp(s) or Slope(s) (Swimming Pool)

### Photos



1



2

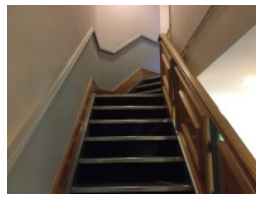
- 
- There is a ramp/slope located leading from the changing area to the swimming pool.
  - The gradient of the ramp/slope is slight.
  - The ramp/slope is permanent.

## Other Floors

### Photos



1



2



3



4

---

## Stairs

### View

- Stairs can be used to access other floors.
- The stairs are for public use.
- The stairs are located to the left as you enter the leisure facilities entrance.
- The stairs are approximately 3m from the leisure facilities entrance.
- Signs indicating the location of the stairs are not available from the entrance.
- There are manual, heavy, single doors to enter the stairwell on the ground floor.
- The floors which are accessible by stairs are G and 1.
- There are 15+ steps between floors.
- The height of the step(s) is/are not between the recommended 15cm and 18cm.
- The height of the step(s) is/are 19cm.
- The depth of the step(s) is/are not between the recommended 30cm and 45cm.
- The steps are clearly marked.
- There is a/are handrail(s) at the step(s).
- The steps have a handrail on the right going up.
- Handrails are not at the recommended height (90cm-100cm).
- Handrails do cover the flight of stairs throughout its length.
- Handrails are easy to grip.
- Handrails do not extend horizontally beyond the first and last steps.
- There is a landing.
- Clear signs indicating the facilities on each floor are provided on landings.

- The lighting levels at the steps are low to moderate.

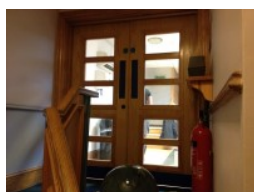
## Comments

[View](#)

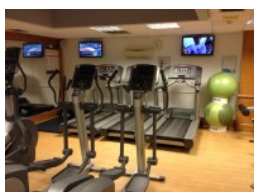
- There is a chairlift on the stairs to overcome the stairs.

## Fitness Suite

### Photos



1



2



3

---

## Access to Fitness Suite

[View](#)

- The fitness suite is located on the first floor.
- There is not level access to the fitness suite.
- There are doors into the fitness suite.
- The doors open away from you (push).
- The doors are double.
- The doors are heavy.
- The opening is 80cm (2ft 7in) wide.

## Fitness Suite (General)

[View](#)

- Staff receive no training in assisting disabled people.
- A portable hearing loop is not available for induction.
- There is not clear manoeuvring space between equipment.
- There is level access to all of the equipment.

## Changing Area (Male)

## Photos



1



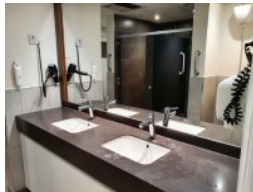
2



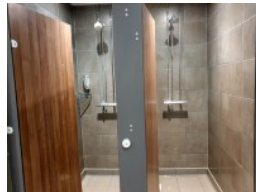
3



4



5



6



7



8

---

## Changing Area

**View**

- There is a/are changing area(s) available.
- The changing area that was surveyed is located to the rear of the main corridor.
- The changing area is approximately 20m from the leisure facilities entrance.
- The changing area is approximately 20m from reception.
- The changing area is approximately 5m from the swimming pool.
- There is step-free access to the changing area.
- The facilities available within the changing area include; standard showers and standard toilets.
- This is a male changing area.
- Similar female changing area(s) are available.
- The door(s) open(s) away from you (push).
- The door(s) is/are single width.
- The door(s) is/are heavy.
- The width of the door opening is 75cm.
- The type of flooring in the changing area is tiles.
- There is not a flashing fire alarm beacon within the changing area.
- There are changing benches or seats within the changing area.
- There are lockers within the changing area.

- There is a/are locker(s) within reach for a wheelchair user.
- There is not a water dispenser available.
- The lighting levels in the changing area are good.

## **Shower Facilities**

**View**

- Shower facilities are available.
- There is step-free access to the shower facilities.
- The shower head height(s) is/are adjustable.
- The shower control type(s) is/are twist/turn.
- There is a flip-down/tip-up seat for the shower(s).
- There is a/are wall-mounted grab rail(s) available for the shower(s).

## **Toilet Facilities**

**View**

- Toilet facilities are available.
- There is step-free access to the toilet(s).
- An ambulant toilet with wall-mounted grab rails is not available.
- The wash basin(s) tap type is lever.
- The lighting levels in the toilet(s) are good.

## **Baby Changing Facilities**

**View**

- Baby changing facilities are not available.